

# The Quilting Bee

Volume XXXV Issue 8

August 2019

## Coming in August!

Our very own, Sheila Parry, will provide a trunk show for guild members. and her "What was I thinking?" experience.

As many of you know, Sheila is a prolific quilter and we are very excited to learn more about her experiences and view her beautiful quilts!



"I've been sewing since my teens and quilting for more than 25 years. My first quilt was an Eleanor Burns Quilt in a Day. Since I had a king sized bed, it made sense to me to make a king sized quilt. Go big or go home, right? That quilt was in shades of mauve and dusty blue (hello mid '80's!) Let's just say my fabric tastes have changed since then!

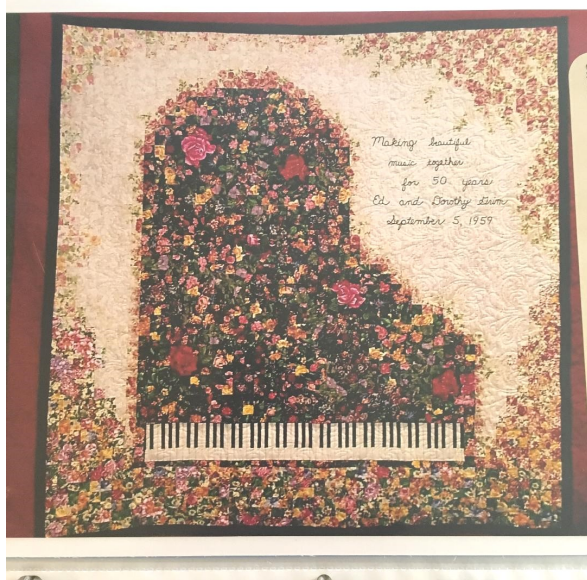


I consider myself a modern quilter, with traditional roots. I'm the founder of the Baltimore Modern Quilt Guild and love speaking to different groups and sharing the modern aesthetic. I'm foremost a teacher. I teach modern quilting classes in local shops, guilds and shows across the country." - Heather Kojan

"I had the opportunity to attend several classes with Heather; she's fun, low-key and very knowledgeable!

You will really enjoy her class!" -Debbie Hood

♦ **Be sure to sign up for her Heather's workshop Log Cabin Improv, to be held on Wednesday September 11. Supply list is on page 16 of this newsletter**



**All Guild meetings are held at the Bob Duncan Center, 2800 S. Center St., Arlington, TX 76014.**

Meetings begin at 6:30pm with check-in and networking time. The guild business meeting begins at 7:00, with the speaker following.

**WORKSHOPS ARE HELD ON SELECT WEDNESDAYS FOLLOWING THE GENERAL MEETING AT:**

The Church of Jesus Christ of Latter-day Saints  
3809 Curt Dr., Arlington, Texas 76016



**It's Almost Time for the  
North Texas Quilt  
Festival!!**

***We have several donations, but can always use more.  
Reminder, we are looking for Items a quilter would use,  
or unique items that a shopper would buy and give to a  
special someone.***

***Please bring to the August Guild Meeting and give to  
Kathy Hester at the Booth Table.***

***Donations from multiple craft talent -- not just sewing  
and quilting, but anything that is homemade such as  
knitted and crocheted items, Homemade Jewelry,  
wood working, painting, paper crafting, spool and  
button crafts.***

***Popular Items that we could use more of are cute  
bags...***

***Larger Project Bags – Hold Individual projects  
Snap or Zipper bags/pouch - hold tools and other small  
items***

***Bowl Cozy – sets of 4 but individual Cozy also great  
Quilts – we have 6 but could use a few more***

***THANK YOU to those who have already made items for  
our quilt booth!***

***Any and all items accepted such as scissor fobs, pin  
cushions, needle catchers, all kinds of different bags,  
name badge holders, items for kids, tooth fairy pillows,  
bibs, mug rugs, potholders, thread catchers, check book  
covers, eye glass holders, pillow cases, table runners,  
iron cases, luggage tags, slippers, casserole carrying  
cases, aprons, jewelry, small paintings, wall hangings,  
greeting cards...the list is endless.***

***Don't forget, QGOA is a Non-Profit 501(c)3  
organization. We have donation receipts upon request.***

## **Sewing's Next Generation!**

The Junior Division of the North Texas Quilt Festival can report that we have 47!!!! junior quilters in the show!!! I would love it if our members, when they attend the show, would stop by and see the exhibit. I am so proud of their accomplishments and can't wait to celebrate their achievements!

Lezleigh

## **NTQF IS AROUND THE CORNER!!!!!!!!!!!!!!!!!!!!**

Thank you to all who entered your wonderful quilts, and submitted 70+ miniatures, and to all who have volunteered.

Pre-show tickets (\$10) are available for purchase at guild meetings in August, or as long as they last.

- \* Concerning miniature quilts: There are a lot of them so go by the display and get your favorite for the BUY IT NOW price. This will avoid the drama and you will have the quilt of your choice.
- \* There are three ways to volunteer for the show.
- \* To volunteer for the expo go to [sewingexpo.com](http://sewingexpo.com) then events to find Arlington and then volunteer. The ambassador jobs are described there. For these, you get a free show ticket for the same day you work 4 hours.
- \* To volunteer for the guild booth see Kathy Hester.
- \* To volunteer for guild jobs: <https://www.signupgenius.com/go/60b0548abaf2aa75-north>
- \* Those who work 4 hours or more will get a QGOA volunteer pin.
- \* ***Finish those quilts that you entered and deliver them to the Convention Center on Monday, August 19 between noon and 5:00. If you need help getting your quilt there let me know.***
- \* Complete your donations for the guild booth.
- \* If you have other questions just call or text me.

Randa Dillon

## Block Party!

### President's Block – “Won't You Be My Neighbor”

Tammy wants to build a neighborhood of house blocks from all of the guild members. She has requested 9 inch finished (9½ inch unfinished) house blocks with off-white or cream (not white) backgrounds. Your blocks do not have to be pieced. They could be appliqué, embroidery, or any combination. Add your personality to your blocks so they reflect you. One of my blocks has a flamingo and bright colors. Have fun!

### UFO Challenge

Let's get those UFO projects finished and ready to use and enjoy. You still have time to sign up and play. Each month you finish your UFO you can earn a free fat quarter – no more waiting to the end of the year for your reward! Fill out the form found in this newsletter. The UFO challenge is ongoing. Quilting and Sewing Expo in August.

### Ugly Fabric Exchange

We will be doing the ugly fabric exchange and challenge in August. Please bring to the August meeting four 9 x 11 inch pieces of fabric or four 10 inch squares. Attach your name, either on a sticky note or pinned, to each piece of fabric. At the break you will pick up a brown bag of four different fabrics.

Then in September you will bring back a finished item. We vote for our favorite and the winner will win a specifically curated gift.



## Cactus Rose Fall 2019

### Away Retreat!

Stephenville, TX

Thursday, Sept 12 – Sunday, Sept 15, 2019

Sign up or make your final payments – Due @ August Guild Meeting

QGOA is offering an away retreat for the great price of \$210 for a 3-night, 4 day retreat! Included in this price is dinner the first night and then full lunch and dinner with continental breakfast Friday and Saturday, a great brunch on Sunday morning. Check-in is no earlier than 10am Thursday and a flexible 2pm checkout on Sunday. 20 + occupancy, sign-ups are going fast, don't miss out! Away Retreat Coordinators: Judy O'Polka & Sherry Livingston. Sign-up form is available on the QGOA website: [qgoa.org](http://qgoa.org) or you may sign-up at the next QGOA guild meeting we will be at the front table (jumping up & down!) Checkout the retreat website for more details: [www.cactusrosehideway.com](http://www.cactusrosehideway.com)

### QGOA VOLUNTEER HOURS JULY 2019

Wow! Volunteer hours reported by our Guild members in June were 948! And I know there are even more hours because there are familiar names missing from the log sheet this month. We have really committed and charitable members. Thanks to the following quilters for their time and dedication:

Cynthia Berend, Shelly Cassata, Debbie Hood, Kayleen Farrington, Kay Olson, Nancy Spell, Elizabeth Cooper, Janice Farris, Claudine Geisel, Penny Kilpatrick, Sharon Ligon, Jolene Mershon, Randa Dillon, Ruth Ann Uzzle, Susan FitzGerald, Christine Weiss, Maria Freitag, Veronica Mowery, Gayle Kregel, Sharon Leary, Ruth Lloyd, Nancy Vestal, Debra Ware, Gloria Speakman, Gayle Lacerda, Lisa Bradshaw, Jane Owens, Karen Scribner, Libby McDuffie

If you don't see your name on these monthly lists, be sure to add your hours to the log sheets at the General Meetings, or fill out the volunteer form online and send it to [irishrose102003@yahoo.com](mailto:irishrose102003@yahoo.com), so that your time will be counted as well.

Know that what you do for others is greatly appreciated and we want to celebrate all your efforts.



## Quilt Guild of Arlington T-Shirts

Guild t-shirts are available for \$20 each! Sizes from M through 3 XL.

Saying on the front of the t-shirt is "Quilters Come with Strings Attached" on a nice soft purple t-shirt.

See Linda McPherson to get yours NOW!!



# Snowball Express

**FYI.** Just a little information to all you quilters about a wonderful organization called "**SNOWBALL EXPRESS**". This organization has very select members. The members are kids ages 5-19 and they are members because they are the survivors of a deceased active military parent. These kids are flown into town and taken to a hotel and get to choose a quilt or blanket as a gift to comfort them. All these kids are able to relate to one another because they all have lost a parent. It is a rare opportunity to share with one another and know they are not the only one, each understands the situation of the other and many come year after year to share. It is a truly worthy cause. Besides receiving a personal blanket/quilt they are treated to airfare, hotel stay, lots of special treatment and amusement. For years these kids have come to Dallas and Ft. Worth. Last year their destination was changed to Florida. They go to the Disney parks and all the other fun activities in Florida. This is a moment in time that these precious kids can leave their burden.

Besides supporting local kids in sickness and trauma, Project Linus donates blankets to Snowball Express. If you have a desire to make a quilt for one of these kiddoes here are some tips: The kids are older so a larger quilt is good. They like themes like all kids (super heroes, sports, racing, camo, cartoon characters, movie characters, specific armed forces theme or any such appropriate fabric). **The organization makes one request-do not put the flag or flag fabric for fear that it will remind the young person of the flag presentation at his/her parent's service.** Hope this gives you some super ideas for a snowball quilt.

**We have to ship those to Florida so it is requested that they be turned in by the guild meeting in October just to make sure they arrive and can get sorted in time for the kids.** If you choose to make one of these, please tag those items specifically for Snowball Express. The meeting took place around the 1st week in December in Dallas and probably the same in Florida .

Thank you for your care and compassion for these kids that share such huge onus. Rest assured that this takes place sadly every year, so if not this year you can get an early start for next year. Thank you

# Military Quilt Project

## 2019 Judged Challenge

Ribbons will be awarded

### Divisions

#### Quilts of Valor

(see website for requirements. [www.QOVF.org](http://www.QOVF.org))

#### Other Quilts

#### Group Quilts

#### Size Requirements

55 x 65 to 72 x 90, ideal size 55 x 65

### REMEMBER!

## Quilts are due at the September meeting

### Be sure to complete an entry form

When you are finishing up your quilt, please see me for a label for the back of your quilt. Or you may make your own. Judging by members at October meeting Goal is minimum 22 quilts in recognition of the 22 Veterans who lose their battle to suicide each day.

I have two tops to be quilted, backing and batting provided. I have a couple of tops started from last year's block project too. If you would like to complete one of them please see me.

Non-judged quilts may still be turned in at any meeting.

Thank You!

Cindy Bergman.

# Military Quilt Project Challenge Entry Form

- Submit an entry form for each quilt entered.
- Military Quilt Project Challenge quilts are due no later than the September 2019 meeting
- Each entry MUST have an entry form attached.
- I have printed fabric labels to attach to quilts.
- Do not attach hanging sleeve.

Entrant \_\_\_\_\_

Entrant email address \_\_\_\_\_

Entrant phone \_\_\_\_\_

Circle one:

Quilts of Valor

Other patterns

Group Entry

Quilt Name \_\_\_\_\_

Quilt Maker \_\_\_\_\_ Quilter \_\_\_\_\_

Quilt Description (some identifying feature or picture) \_\_\_\_\_

Quilt Dimensions: Width \_\_\_\_\_ Length \_\_\_\_\_

Quilters entering a challenge quilt by the September meeting that purchased a shop my stash bag will receive a \$5.00 gift card.

Judging and ribbon awards will be at the October meeting.



Dear members of the Guild and friends of Project Linus:

It is now August and we are hopefully all staying cool. There was a large turnout of gals/guys that sew monthly for the children of Project Linus. We meet the second Thursday of the month at Westminster Presbyterian Church at 7100 Trail Lake Dr. Ft. Worth. We meet from 9:30 to 2:30. We bring our machines, our sack lunch, and if we have a special project, bring that. Generally we sew together quilt sandwiches and turn them inside out and close the turning panel and sew the down the outer edge. Then another group ties the quilt. We do this all day and share news, tell jokes, and discuss all sorts of things. Please feel free to join us anytime or even drop by to check us out and/or deliver something you have to contribute.

This month we offer special thanks to Robbie Colley, Janice Farris, Jolene Mershon, Debra Hood, the bolt fairy, Judy Liston, Maria Freitag, Janice and David Mowery, and some of you took kits and we look forward to seeing those as quilts or tops. More thanks to Pat Shelton, Kara Overman, Jane Owens, Elizabeth Carr, Randa Dillon, and anonymous. You all are super!!!!

At our meetings we have sewers, a group tying quilts, crocheters and knitters, sandwich assemblers, donations, and just sew and sew. We have trade days when one can take donated fabric to assemble a quilt to return and be given to the hospitals. We have show and tell at the noon break and then back to sewing. Some days we have a specially taught class on a particular pattern.

**Again the hospitals request different sizes 44 X 40 for the smaller kiddos and 57 X 44 for the bigger kids.** If you are searching for a new pattern, try websites of

[www.projectlinus.org;patterns](http://www.projectlinus.org;patterns) (crochet, knit, sewing etc) are available there. Also Quiltmaker Magazine designs a new pattern for Project Linus which is available on their website along with archived patterns from previous years. So Google those if you desire.

Please remember the work we do for our guild and our community enriches us and generations to come.

Sincerely Elizabeth

## **2019 August SafeHaven Report**

Well we broke my goal again!! 55 purses and 783 total items were collected at the July meeting. Thank you just doesn't seem like enough, however, Thank you!



***For the month of August, we are collecting school supplies. An additional article on page 17 of this newsletter will have the needs listed. Last year we collected 1,993 items, including 45 backpacks. Can we do 2000 items and 50 backpacks? I think so!***

*Again, thank you for your generosity!*

*Cynthia Berend*

# Sunshine And Shadow

Extra...extra...read all about it! Newsy Suzy is on the Sunshine and Shadow job! Please text or email Susan FitzGerald with any good, bad, happy or sad happenings!

Sunshine and Shadow as of 7-22-19

☺ Pam Pape went in for major back surgery on the 26th of June. She is home and on the road to recovery. Wishing you more strength with each coming day!

☺ Kathy Longstreet — Update Jul 19, 2019  
"There is good news. This morning, I visited with my urology surgeon. He said he believes that all cancer has been removed! Thanks be to God!!! Dr. Webster removed 33 lymph nodes, the bladder, the ureters, and did a total hysterectomy. There is no evidence that cancer spread beyond the stage 2 tumor contained within my bladder. A CT Scan and blood work will be done in three months as a follow up." That's great news Kathy!



☺ Sheila Kinsey had carpal tunnel release surgery on right hand at the end of June. Her stitches are out and she's been going to OT. Her Doc thinks the feeling in her thumb and index finger will come back. She has been suffering from "lack of handwork withdrawal" for several months now and is tired of it! We hope you're stitching again real soon!

☺ Sheila Parry had gallbladder-induced pancreatitis surgery on July 24th. She is home and on the road to recovery. Healing thoughts going your way!

***Susan FitzGerald and Kathy Hester***

***You will always find a smiling face when you join us at our guild meetings held at 6:30pm on the second Tuesday of the month, at the Bob Duncan Community Center, at Vandergriff Park, 2800 S. Center St., Arlington, TX 76014***



## ***Our 2019 Donation Quilt***

***"Bunnies In the Garden"***

***Size 92" X 79"***

***Made by members of Friendship Stitchers***

***Quilted by Sabina Thompson***

***Designed by Nancy Spell***

***around two blocks by Edyta Sitar***

***Be sure to get your raffle tickets NOW!***



## *Celebrating YOU!!*

We will be including (if you told us yours) birthdays in our newsletters this year. Don't worry, they will not have specific dates as I would like to keep your personal information out in the web to a minimum!  
Just a birth month along with the names for that month will be published.

### *August*

Ginny Miller	Pat Sweeten
Marie Eggleston	Katie Favara
Sherry Livingston	Karol Blaylock
Gloria Speakman	Kathy Hester
Christine Weiss	Sheila Parry
Sarah Muñoz	Linda Frey
Martha Rodriguez	Stephany Banks
Shelly Uggen	Kee Jackson
Earleen Isbell	Marilyn Mowry
Janice Mowery	Carol Staehle
Nancy Conner-Smith	Barbara Miller
Patricia Eckstrom	Vanessa Bingham
Janet Milum	

## *Upcoming 2019 Activities*

Sign up for your 2019 workshops! Don't wait until the last minute! Check below for the lectures and workshops scheduled for 2019. Remember to check the website for workshop info, supplies and signups.

**August** - Sheila Parry - Trunk Show

**September** - Heather Kojan - Quilt Remix: UFO's, Orphan Blocks and what was I thinking?

Fresh ideas for stale projects.

**September** - Heather Kojan - Log Cabin Improv workshop

**September**- Cactus Rose Fall 2019 Away Retreat!

Thursday, Sept 12 – Sunday, Sept 15, 2019

**October** - Military Quilt Challenge

**November** - Sharon & Loren Wilhelm of Quilt Ideas - The Spirit of Christmas

**December** - Miss Persis' dance studio, potluck, door prizes and quilt raffle reveal!

Happy Quilting! Debbie Hood

## **Get Involved! Join a Stitch Group!**

### **\*\*Sew-N-Sews\*\***

Meets @ Trinity United Methodist Church  
1200 W Green Oaks Room A208  
1st Monday of the month unless it is a Holiday  
10 am to 3 pm Bring your lunch and \$3 per person  
per meeting as a donation to the church  
Contact: Randa Dillon or Carolyn Bowden

### **\*\*Jane and Friends\*\***

Meets @ Quilt Among Friends  
2238 Michigan Ave. Suite A  
Bring 2 cans of food for the Food Pantry  
2nd Monday of the Month 10:30 am-3 pm  
Contact: Sherry Livingston

### **\*\*Felted Wool Gathering\*\***

Meets @ Quilt Among Friends  
2238 Michigan Ave. Ste. A  
Bring 2 cans of food for the Food Pantry  
4th Monday of the month 10:30am  
No instructors or specific projects  
Contact: Gayle Lacerda

### **\*\*Friendship Stitchers\*\***

Meets the 1st & 3rd Thursdays 10:00 am at  
First Christian Church  
Contact: Helga Smith

### **\*\*Linus Project \*\***

Meet the 2nd Thursday of the month at Westminster  
Presbyterian Church at 7100 Trail Lake Dr. Ft.  
Worth. We meet from 9:30 to 2:30

### **\*\*Sew Touching\*\***

Meets @ Quilt Among Friends  
Bring 2 cans of food for the food pantry.  
4th Thursday of the month 10am—5pm  
Bring 2 cans of food for the Food Pantry

### **\*\*The Piecemakers\*\***

Meets @ Bob Duncan Community Center  
2nd & 4th Thursdays 6 pm to 10 pm  
Contact: Nancy Shortino-817-466-1279





### ***Guild Refreshments***

In case you were wondering about how those delicious snacks appear at our guild meetings this is how it's done! Please feel free to contribute as you are able.

***Snacks are provided by those whose last name begins with the letter for that month.***

Jan = C, T	June = Potluck (Board Desserts)
Feb = H, V	Jul = G, L, O
Mar = M	Aug = B
Apr = S	Sep = F, I, J, K
May = A, D, Z, E	Oct = N, P, R
	Nov = U, W, X, Y
	Dec = Potluck (Board Desserts)

### **QGOA Newsletter Ad Rates**

SIZE	1MO	3MO	1 YR
1/8 PAGE	\$7.50	\$22	\$85 (Business Card Size)
1/4 PAGE	\$15	\$40	\$150
1/2 PAGE	\$30	\$75	\$270
1/2 PAGE (BACK)	\$40	\$105	\$378
FULL PAGE	\$60	\$150	\$540

All ads must be print ready and fit the size requirement. Ads must be received by the 15th of the month prior to the desired publication month. Email preferred. Email ad to: freitagmaria@yahoo.com

### **Make payments to: QGOA**

Mail payments to: Maria Freitag, 5506 Ceran Dr., Arlington, TX 76016

**Quilters Guild of Arlington  
Fall Day Retreat  
October 16, 17, & 18, 2019**

**For: QGOA Members; space is limited to 60 persons**

**When: Wednesday, Thursday, & Friday, October 16-18, 2019**

**Wed. & Thurs. 9:00 AM – 8:00 PM,  
Fri. 9:00 AM – 4:00 PM**

**Where: Eunice Activity Center, 1000 Eunice Street, Arlington 76010**

**Cost: \$60 per person.**

***Limited space is still available for this retreat.***

**Please contact Sherry Livingston. Hope you will be able to join us for this fun retreat!**



## 2020 RONALD MC DONALD CHALLENGE!

Much thanks goes out to the 22 members who purchased 2020 challenge fabric packets at July's meeting!!!!

Congratulations goes out to Sheila Parry and Gayle Lacerda for winning the drawing for backing fabric!!!!

There are 10 packets left. Members who purchase packets at the August meeting will be put into a drawing and two members will win batting.

I will be prepared as early as the August meeting to collect the finished quilts.

*The first eight members who turn in their quilt entry, either challenge fabric entry or non-challenge fabric entry, will receive a packet of coordinating fat quarters.*

The newsletter as well as the website contain the 2020 guidelines and the 2020 entry form. Please let me know if you have any questions. Thanks,  
Veronica Mowery

### 2020 Ronald McDonald House (RMH) Quilts Challenge

In 2020 there are two types of Ronald McDonald House Quilts Challenges:

#### ***Ronald McDonald House Challenge Fabric Quilt Guidelines***

This challenge fabric is donated by Quilt Among Friends. Please take opportunities to thank them for their sponsorship.

Packet containing the challenge fabric is \$5. The quilt maker who uses this fabric and turns the quilt in at the in May 2020 guild meeting will receive a \$5 gift card from Quilt Among Friends.

Quilts must use a recognizable amount of the challenge fabric in the quilt.

Maker may use any other coordinating fabrics. The quilt must be washable and have no buttons or similar items attached that could be accidentally swallowed by young children.

Finished quilts must be at least 50 inches on each side.

\*\*\*\*Quilts must have an entry form and turned in at the May guild meeting. You do not need to add a sleeve.

Entries will be displayed at the June guild meeting and members will vote on them for ribbons.

#### ***Ronald McDonald House (non-challenge fabric) Quilt Guidelines***

To be donated to Ronald McDonald House any fabric may be used.

The quilt must be washable and have no buttons or similar items attached that could be accidentally swallowed by young children.

Finished quilts must be at least 50 inches on each side.

\*\*\*\*Quilts must have an entry form and turned in at the May guild meeting. You do not need to add a sleeve.

Entries will be displayed at the June guild meeting and members will vote on them for ribbons.

Packets are available at the general meetings. Get together with Veronica Mowery and get your packet NOW!

For more information regarding RMH Ft Worth: <http://www.ftworthrmh.org>.

***Ronald McDonald House . . . providing a "home-away-from-home" for families with seriously ill children who travel to Fort Worth for pediatric medical care.***

## 2019 NTQF Show Calendar

**Event Location** – Arlington Convention Center, 1200 Ballpark Way, Arlington, TX 76101

**Quilt Check-In/Drop Off** - Monday, August 19, 2019 12:00 – 5:00 pm

at Arlington Convention Center

**Quilt Pick Up** - Saturday, August 24, 5:45 pm – 7:00 pm

---

### General Information

- ◆ Quilts must remain on display for the entire festival and must be clean, in good condition, free of animal hair and smoke.
- ◆ Quilts will be accepted in the order registered with total number of entries limited per the site and participating guild. more than one quilt, please specify your order of preference for each entry.
- ◆ Quilt width must be 96" or less due to site limitations. Quilts wider than 96" WILL NOT be accepted.
- ◆ Quilts over 90" in height have special sleeve requirements. Please see the sleeve requirements in the Quilt Preparation section.
- ◆ The Show Committee reserves the right to refuse any entry that it deems inappropriate or that does not meet the requirements.
- ◆ Quilts will be placed in size categories by the Show Committee based on the total entries received.
- ◆ Entrants are responsible for their own insurance on all items. The completed Entry Form releases North Texas Quilt Festival and Original Sewing & Quilting Expo, its officers, agents and volunteers from all liability.
- ◆ Ribbons and Awards will be given at the discretion of the Judges and Show Committee to winning quilts, not the maker(s); therefore there will only be one ribbon per award. Merit quilting ribbons will be given to quilts for exemplary hand and machine quilting. Ribbons and/or awards for special attributes may be given from participating guilds, national, and local entities.

### Quilt Preparation

**Sleeve** – Quilts must have an attached, sewn 4" sleeve. Quilts under 24" may have a 2" sewn attached sleeve. The sleeve should be the same width as the quilt, not including the binding. The sleeve should include ½" of ease and be stitched to the quilt on both the top and bottom of the sleeve. Entries without a sewn sleeve will not be accepted.

Quilts

longer than 90" require the top of the sleeve to be placed 90" from the bottom of the quilt to ensure that the quilt will not touch the floor when hanging.

**Festival Quilt Identity Label** – A quilt label should be sewn on a lower back corner. The label should include: a) the name of the quilt; b) the entrant's name; c) the entrant's address; d) the entrant's phone number. This is a Festival Quilt Identity Label; a personal label does not substitute, unless it includes all of the above information. To ensure impartiality in judging, please apply a fabric flap sewn or carefully safety pinned along the top edge only of the Festival Quilt Identity Label in order to conceal your personal information.

**Fabric Bag** – Each separate entry must be submitted to check-in in a fabric pillowcase or any fabric bag sized to fit your quilt (no plastic bags). The outside of the fabric bag must be clearly labeled with the entrant's name and phone number in permanent lettering either sewn or in ink.

**Quilts requiring special handling/packaging** will not be repackaged into their special packaging. It is up to the entrant to repack these quilts at Quilt Pick-Up. All quilts must be able to be stacked with other quilts without potential damage to your quilt or any other quilt in the show.

### Quilt Check-In/Dropoff: Monday, August 19, 2019 12:00 – 5:00 pm

At Arlington Convention Center, 1200 Ballpark Way, Arlington TX 76011

Please have quilts ready for examination at Quilt Check-In for the required Festival Quilt Label and Sleeve.

Entries will not be accepted if not in a properly-labeled cloth pillowcase or bag.

You will receive a Claim Check for each quilt submitted.

If someone else will be picking up your entry, please inform the Check-In Team.

Please contact your guild NTQF Representative or arrange with a guild member for assistance in dropping off your quilts during the drop-off hours.

**Quilt Pick UP: Saturday, August 24, 2019 5:45 pm – 7:00 pm**

At Arlington Convention Center, 1200 Ballpark Way, Arlington TX 76011

Must have Claim Check for each quilt you are picking up.

If you cannot pick up your quilt, please make arrangements for someone to help you with this. Unclaimed quilts will receive loving foster care until they are reunited with their owners. An after-show foster care fee will be charged at 8:00 pm on Saturday, August 24, and again at 8:00 pm on each subsequent day of foster care. The fee is \$10.00 per day per quilt.

Quilts requiring special handling/packaging will not be repackaged into their special packaging. It is up to the entrant to repackage these quilts at Quilt Pick-Up. Please allow extra time for pick up as quilts packaged in standard fabric bags will be processed first.



Thanks to Cynthia Regone for joining us on July 9, 2019. Your wonderful presentation of just what we can do with our block exchanges, and how we can work with the unexpected surprises that we may receive!



## June Show and Tell

Please remember to fill out a Show & Tell form so we can acknowledge you and your quilt in the newsletter.

Presented by	Name of Quilt	Quilter	Description
Cindy Bergman	Old Missouri Home		Fons & Porter Home State Home pattern. I used photos left over from my tree quilt. Quilt will be donated for auction at our family reunion
Judy O'Polka	Umbrellas		From an Angela Walters pattern
Mary Jones	Halloween Dresden Village		Put together slightly different than you are used to. I took a class 2yrs ago, and then taught one. I will be teaching a 2-3 hr class at Richland Sewing on September 14 & 28, \$30, choose Halloween or Christmas
Tory Swartzwelder	Army Strong		Home Ala Mode had conversation squares that blended well with the military fabric I checked out. Bought the whole bolt of military eagles Used fleece on the the back .
Machelle Athon	Princess and the Frogs		From an Angela Walters pattern

## July Show and Tell

Presented by	Name of Quilt	Quilter	Description
Charlotte Humphrey	A Gift for Elizabeth		A pillow with pocket for my great granddaughter's first birthday
Charlotte Humphrey	Louisiana Memories		This was begun in 2006 and finished in 2019. It was a challenge from my N. Louisiana quilt guild
Elizabeth Cooper	Scrappy Squares		These blocks were a class at Project Linus about 3 years ago. I finally got it put together and didn't have enough so I added other fabric. I have a few patterns for this, if you are interested come see me at the back of the room.
Joan Gregory	Happy Quilt	Scarlet Alkins	3 half price layer cakes and a free downloaded pattern on Etsy
Claudia Klipp	Jim's Retirement Quilt	Gloria Densmore	My husband retired from a job that allowed him to wear jeans and Hawaiian shirts instead of a suit and tie. When I saw this pattern a Common Threads I knew I had to cut up 20 of his favorite shirts.
Christine Weiss	Hidden Rose Garden		This is my 35year UFO project. I started hand piecing 5296 one inch hexies before English Paper Piecing came around. Hidden among the rose bushes and grass are more than 300 objects: birds, butterflies, garden tools, spiders, rabbits, cats, mushrooms, bird nests, a turtle, etc. Can you find them all? This is also my quilt show entry.
Pat Madrid	Green Whole cloth	Pat Madrid	Satin and polyester and batting
Pat Madrid	Whole Cloth	Pat Madrid	Dupioni Silk and satin whole cloth quilt w/ double layer of woo batting. Special thanks to Gayle Lacerda, Julie McCloud, and especially Susan Corbett for their help with this quilt.
Piecemaker Stitch Group	12 Bug Jar Quilts	Debra Ware	These 12 unique bug jar quilts will be donated to the Ronald McDonald House
Randa Dillon	Pinwheels on Edge		This was made by using half square triangles and four patches that we swapped at the guild several years ago.
Sheila Parry	Cactus for Rico		I'm making this baby/child quilt for a lady at church and her new grandson. The background is Disappearing 9 patch with southwest batik prints
Deanna Chronister	Moda Love Quilt		The Moda Love Quilt is a free pattern on Unitednotions.com I used 1 charm pack from the "Cheeky fabric line. I custom quilted it on a long arm machine using rulers and free motion.
Deanna Chronister	Opposition from the book "Civil War Rememberd"		The original quilt finished at 30 inches square. I enlarged it to fill a large table. I quilted it using an all over pantograph pattern on a long arm machine.
Libby McDuffie	Blooming!		Blooming 9 patch quilts. I worked up the traditional pattern so you sew 2" strips—not the 1 3/4". Email me if you want my pattern! From a cat at least a decade ago! Yeah, got them finished!

## ***QGOA Volunteer Hours and Community Service***

Tracking of volunteer hours is a way to document time spent by members of our guild in promotion of our craft of quilting and in service to our community. Why does this matter? Initially it helps justify our status as a non-profit organization. Just as importantly, it offers us a way to acknowledge and celebrate your dedication.

There is a log sheet available at every General Meeting for you to record your volunteer time, but we know that some members cannot make it to meetings every month. We want to make sure that all your efforts are recognized, so now you can also fill out this form and email it to the Volunteer Hours Chair (irishrose102003@yahoo.com) at your convenience, making sure that your time is counted.

What counts as volunteer hours? Activities that promotes our quilt craft or supports QGOA success -

- ◆ Time in making quilts for any of our donation projects: Wounded Warrior, Linus, Ronald McDonald or for other charitable cause such as disaster relief
- ◆ Time on Guild business: newsletter, website, library, retreats and events organization, publicity, selling tickets for donation quilt, Guild work for the charities we support
- ◆ Time for the Quilt Show: prep, publicity, set-up and take down, making products for our booth sale, making miniature quilts for the sale
- ◆ Time (unpaid) spent teaching friends, neighbors, children how to quilt
- ◆ Other charitable activity that ties into QGOA missions

So take a little time to count up and record those hours you so generously give of yourself and your skills. Volunteer names are published each month in the Newsletter and we want to thank and celebrate YOU!

Name \_\_\_\_\_ Month \_\_\_\_\_

Activity \_\_\_\_\_ Time \_\_\_\_\_

Activity \_\_\_\_\_ Time \_\_\_\_\_

Activity \_\_\_\_\_ Time \_\_\_\_\_

Activity \_\_\_\_\_ Time \_\_\_\_\_

Guide to # Hours typical for making these standard quilt sizes (*yours could be more time than these*)

Crib 36x45 12 hours

Twin 63x97 43 hours

Queen 84x102 60 hours

Throw 56x75 30 hours

Full 78x97 53 hours

King 100x102 72 hours

## 2019 UFO Challenge

List the project you will be finishing each month (e.g. quilt top or finished quilt) in both the top and the bottom halves of the sheet. Return the bottom half to Kara Overman.

Feb \_\_\_\_\_

Mar \_\_\_\_\_

Apr \_\_\_\_\_

May \_\_\_\_\_

Jun \_\_\_\_\_

Jul \_\_\_\_\_

Aug \_\_\_\_\_

Sep \_\_\_\_\_

-----  
**Return the bottom half to Kara Overman**

Feb \_\_\_\_\_

Mar \_\_\_\_\_

Apr \_\_\_\_\_

May \_\_\_\_\_

Jun \_\_\_\_\_

Jul \_\_\_\_\_

Aug \_\_\_\_\_

Sep \_\_\_\_\_

Name \_\_\_\_\_ Phone ( \_\_\_\_\_ ) \_\_\_\_\_ - \_\_\_\_\_

## ***Heather Kojan Workshop Supply List***

10-12 fat quarters (a mix of solids and prints works best) (makes a 52x66" quilt)  
3 yards background fabric\*  
½ yard binding\*  
pattern (will be available for \$10 as part of kit)

Helpful tools

24" ruler

12 ½" square ruler

Rotary cutter

Cutting mat

\*needed to finish the quilt, but not for the workshop

[https://www.google.com/url?](https://www.google.com/url?sa=t&rct=j&q=&esrc=s&source=web&cd=1&cad=rja&uact=8&ved=2ahUKEwj6orTX6OTfAhVNvKwKHZd7CPAQFjAAegQIBxAB&url=http%3A%2F%2Fwww.heatherkojan.com%2Fp%2Flectures-and-workshops.html&usg=AOvVaw1wrTixlHPXbOLE6xmydGa-)

[sa=t&rct=j&q=&esrc=s&source=web&cd=1&cad=rja&uact=8&ved=2ahUKEwj6orTX6OTfAhVNvKwKHZd7CPAQFjAAegQIBxAB&url=http%3A%2F%2Fwww.heatherkojan.com%2Fp%2Flectures-and-workshops.html&usg=AOvVaw1wrTixlHPXbOLE6xmydGa-](https://www.google.com/url?sa=t&rct=j&q=&esrc=s&source=web&cd=1&cad=rja&uact=8&ved=2ahUKEwj6orTX6OTfAhVNvKwKHZd7CPAQFjAAegQIBxAB&url=http%3A%2F%2Fwww.heatherkojan.com%2Fp%2Flectures-and-workshops.html&usg=AOvVaw1wrTixlHPXbOLE6xmydGa-)  
Heather Kojan website link





**SAFEHAVEN**

# Back to School Supply Drive

For additional information, contact Courtney scull at [cscull@safehaventc.org](mailto:cscull@safehaventc.org).

- Backpacks**
- Lunch Boxes**
- Composition Notebooks**
- Wide Rule Spiral Notebooks**
- Folders with Brads**
- Binders and Dividers**
- Wide Rule Paper**
- Pencil Boxes**
- Clip Boards**
- Ziploc Bags**
- Facial Tissues**
- Hand Sanitizer**



- Glue (Elmer's and Stick)**
- Ballpoint Pens**
- Pencils (No. 2 and Color)**
- Markers**
- Dry Erase Markers**
- Highlighters**
- Pink Erasers**
- Construction Paper (Color and Manila)**
- Scissors**
- Children/Teen Tennis Shoes**

